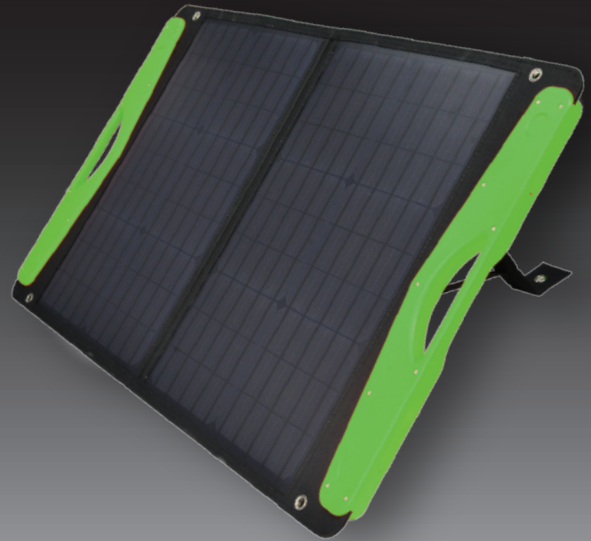
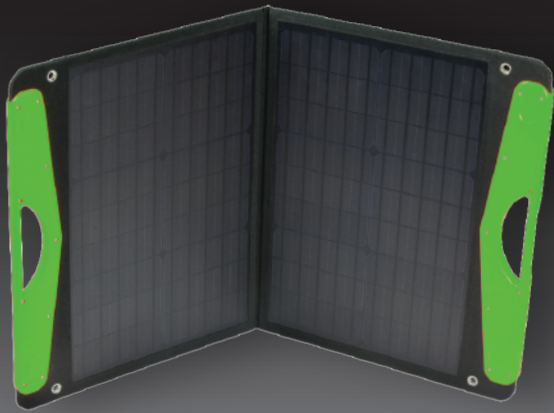


NEOLITHIX

A NEW ERA OF PORTABLE POWER



PX60

TECHNICAL SPECIFICATIONS

Output 60W max

Cell type Monocrystalline

Cell efficiency 20.6%

Dimensions (folded) 530*440*45mm

Dimensions (unfolded) 525*1190*25mm

Weight 2.5kg

Voc (V) 23.4

Vmp (V) 19.8

Isc (A) 3.21

Imp (A) 3.03

Inc. cables + accessories LS1012E charge controller, 4m 14AWG cable with battery clips (fuse included)

USB-A Outputs 2 x 5V/2A

Warranty 2 years



neolithix.com.au



hi@neolithix.com.au